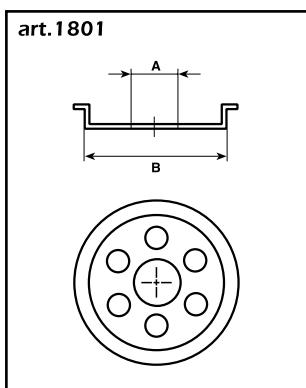


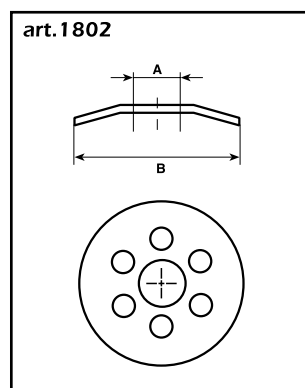
MOUNTING ACCESSORIES FOR MOPS AND BRUSHES

For mounting mops and brushes on the polishing machine's shaft, it is necessary to use:

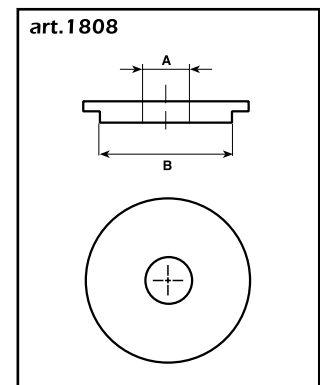
- **sheet metal centres:** to adapt and reduce the internal bore of the mops/brushes to the shaft diameter.
- **cardboard spacers:** where buffs have a larger width on the outside circumference when compared with the width of the metal rings, cardboard spacers must be used to offset this difference in width. If this is not done, the metal rings could open. In addition, the use of the cardboard spacers avoid the buffs sliding on the shaft.
- **locking flanges:** to lock the buffs and the sheet metal centres to the shaft of the machine



art. 1801
SHEET METAL CENTRES
external \varnothing 55-230 mm.
internal bore at request
- re-usable -



art. 1802
STEEL LOCKING FLANGES
external \varnothing 90-270 mm.
internal bore at request
- re-usable -



art. 1808
ALUMINIUM LOCKING FLANGES FOR FLAP WHEELS
external \varnothing at request
internal bore at request
- re-usable -

| BUFFS/MOPS INTERNAL BORE | REDUCTIONS | CARBOARD SPACERS | FLANGE (PAIRS) |
|-----------------------------|------------------------|------------------------|------------------------|
| | art. 1801 | art. 1804 (cardboard) | art. 1802 (steel) |
| | external \varnothing | external \varnothing | external \varnothing |
| 55 mm. | 55 mm. | 90 mm. | 90 mm. |
| 80 mm. | 80 mm. | 120 mm. | 120 mm. |
| 110 mm. | 110 mm. | 150 mm. | 150 mm. |
| 130 mm. | 130 mm. | 170 mm. | 170 mm. |
| 150 mm. | 150 mm. | 200 mm. | 190 mm. |
| 180 mm. | 180 mm. | 220 mm. | 220 mm. |
| 230 mm. | 230 mm. | 280 mm. | 270 mm. |



Cardboard spacers

art. 1804
CARDBOARD SPACERS
 external \varnothing 90-280 mm.
 internal bore at request
 - re-usable -



Reductions and flanges

art. 1820
FLANGES FOR BIG DIAMETER
BUFFS
 availables for the dimensions
 of big diameter buffs
 - re-usable -

Notes: the mounting accessories can be re-used: when buffs or brushes are consumed, the reductions, the spacers and flanges can be mounted on new sets. It is also possible to produce buffs and brushes with inside reductions made to measure: this feature involves a huge increase of buffs and brushes prices.

